

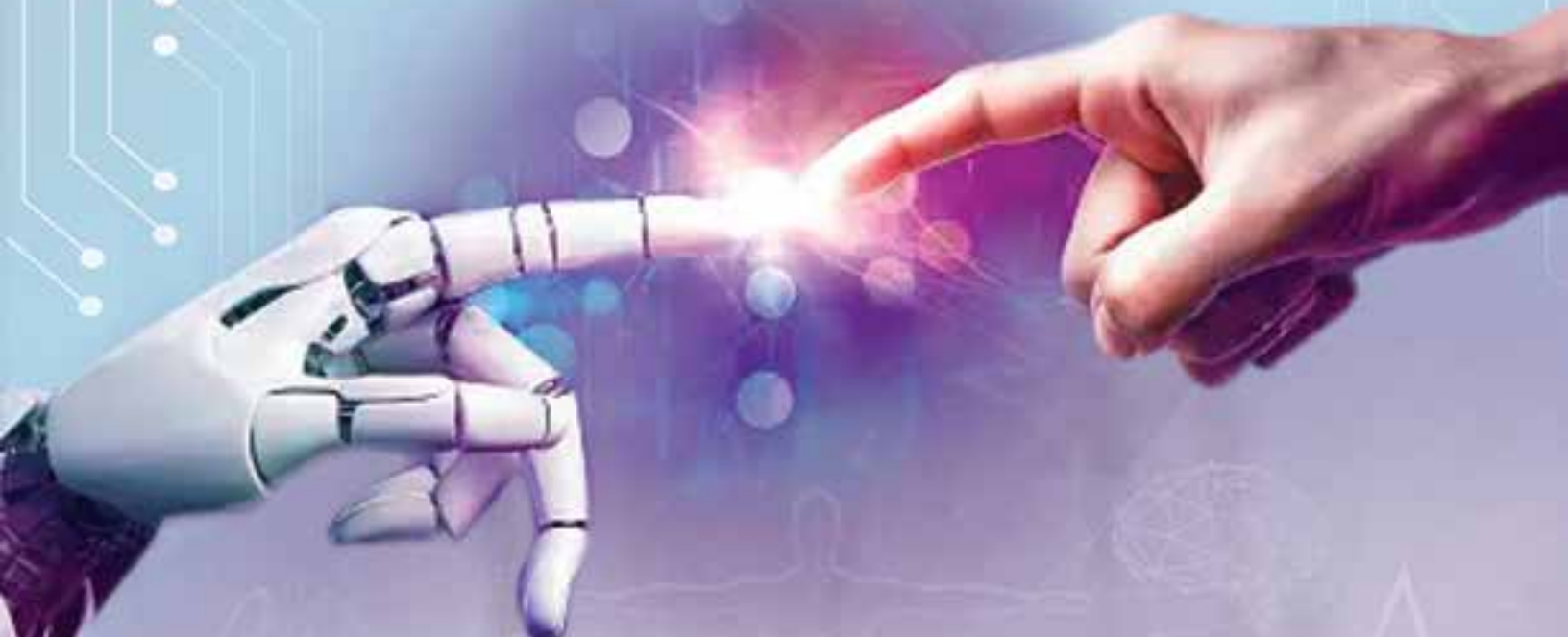


**MEDESTA**  
Healthcare Pvt. Ltd.

Division of Medesta

**WYLC+**

Efficiency in Health, Excellence in Care



PRODUCT CATALOG

**Med Devices**



Introducing Wylo, a division of Medesta Healthcare dedicated to providing innovative solutions for efficient healthcare delivery and excellent patient care. With a focus on quality, reliability, and affordability, Wylo offers a range of medical devices designed to enhance the healthcare experience for both patients and healthcare providers.

#### OUR PRODUCT RANGE

- IV Cannula
- Safety I.v. Cannula
- 3 Way Stopcock Extension
- Extension Line
- Disposable Infusion Pump
- Disposable Pressure Transducer
- Needle Free Connector
- Blood Transfusion Set
- Burette Set
- IV Flow Regulator
- IVSet
- Heat & Moisture Exchanger Filter
- Spinal Needle
- Yankauer Suction Set
- Hemodialysis Catheter
- Skin Stapler
- Closed Wound Drainage Catheter
- Ligation Clips
- Endotracheal Tube
- Oxygen Mask
- Nasal Cannula
- Nebulizer Mask
- Catheter Mount
- Lung Exerciser
- Ventilator Circuit
- Silicone Manual Resuscitator
- Foley Balloon Catheter
- Silicone Foley Balloon Catheter
- Thoracic Drainage Catheter
- A.V. Fistula Needle
- Bloodline Tubing Set
- Medical Surgical Disposable

#### Why Choose Wylo

- Quality Assurance
- Affordability
- Global Reach

#### MANUFACTURING CERTIFICATIONS

All Wylo products are manufactured in compliance with international quality standards and carry the following mandatory certifications:

- ISO 13485:2016
- FDA Approval
- CE Mark
- RoHS Compliance

**Join us on our journey to better health and wellness.**

Choose Medesta Healthcare – where every product is a pledge of purity, safety, and excellence.

Let Medesta Healthcare be your trusted partner in health, providing you and your loved ones with the care and quality you deserve. Contact us today to discover a world of premium disposable healthcare products tailored to your needs.



## MANAGING DIRECTOR DR MONICA SOOD BHATIA

An Innovative International Business Leader with over 25 years of experience of leading businesses in the healthcare & technology sector in India, UAE & other international markets. A medical professional and a Harvard Business School graduate, is a consultant to many leading healthcare organizations such as Tata 1mg, Doxy me USA, Pristyn Care and FCB ULKA (World's most Awarded and also India's No.1 Ad. agency for companies & brands like Amul, Horlicks, Digene, Sundrop etc).

Has been the Publisher of CIMS drug directory, Indian drug review, CIMS doctor newspaper and various medical journals like Orthopaedics Today, Gastroenterology Today, Diabetes Today, Medical Progress, Hospital Today, Paediatrics Today, Ophthalmology Today, Journal of Paediatrics, Obs and Gynae etc .

Having been the Managing Director of India and Middle-East business of the largest multichannel healthcare media company in Asia-pacific, 'CIMS Medica' for 15 years, have had the opportunity to work in diverse cultures, markets and industries.

Started & established various pharma and Healthcare events - Exhibitions, Scientific Conferences, Awards and B2B events (Indian Pharma Expo, Business Excellence Awards Hospital Management Conference, Asia-Pacific Cardiometabolic Summit and CIMS Healthcare Excellence Award).

### Received various Awards and Accolades.

- ◆ **"Global Achievers Award 2019"** in Moscow, Russia for Business excellence by Hon. Sergey Cheremin - Minister of the government of Moscow Russia.
- ◆ **"Prime Leader Award"** in Global Premium Awards, Dubai 2018.
- ◆ **"Business Transformational Leader of The Year Award"** in ABP News at ABP News National Healthcare Leadership Awards, Mumbai 2017
- ◆ **"Healthcare Personality of the Year Award 2017"** by Medgate Today in 7 MT India Healthcare Awards, Delhi 2016.
- ◆ **"JBRHealth Education and Research Award"** USA 2016.
- ◆ **"Women's Achiever Award"** Mumbai 2015.
- ◆ **Award of Recognition** by Invision Medi Sciences, Bangalore 2014
- ◆ **"Innovative Publisher Award"** by UBM Medica, Thailand 2007
- ◆ **"Top Achiever"** by UBM Medica, Thailand 2007
- ◆ **"Outstanding Country"** by CMP Medica, Singapore 2006

### Malaria Pf-PAN Ag Test

- Chromatographic immunoassay
- Detection of (Pf, P.vivax, P.Ovale & P. Malaria) in Human Blood
- Specimen: Whole blood
- Result interpretation time: 15 – 20 Mins.
- Sensitivity: 100 %
- Specificity: 100 %



### Malaria Pf-Pv Ag Test

- Chromatographic immunoassay
- Detection of Pf-HRP II and Pv-pLDH specific antigens
- Specimen: Whole blood
- Result interpretation time: 15 – 20 Mins.
- Sensitivity: 100 %
- Specificity: 100 %



### Hepatitis B (HbsAG) Ag Test

- Chromatographic immunoassay
- Detection of Hepatitis B Ag virus specic antigens
- Result interpretation time: 15-20 Mins
- Specimen: Serum/Plasma
- Sensitivity: 100 %
- Specificity: 100 %



### Hepatitis C (HCV) Ab Test

- Chromatographic immunoassay
- Detection of Hepatitis C Ab Virus
- Specimen: Serum/Plasma
- Result interpretation time: 15-20 Min.
- Sensitivity: 100 %
- Specificity: 100 %



### HIV SYPHILIS COMBO

- Chromatographic immunoassay
- Detection of HIV and Syphilis antibodies
- Specimen: Whole blood/ Serum/ Plasma
- Result interpretation time: 15-20 Mins.
- HIV 1 & 2 Ab :**
- Sensitivity: 100%, Specificity: 100 %
- Syphilis Ab :**
- Sensitivity: 95%, Specificity: 100 %



### Syphilis Ab Test

- Chromatographic immunoassay
- Detection of Specific TP antibodies
- Specimen: Serum /Plasma
- Result interpretation time: 15-20 Mins.
- Sensitivity: 99 %
- Specificity: 100 %



### HIV 1 & 2 Ab Test

- Chromatographic immunoassay
- Detection of HIV 1 & 2 antibodies
- Specimen: Serum/plasma
- Result interpretation time: 15-20 Mins.
- Sensitivity: 100 %
- Specificity: 100 %



### Typhoid Ab Test

- Chromatographic immunoassay
- Detection of Anti Salmonella typhi ( S. Typhi) IgG/IgM
- Specimen: Serum/Plasma
- Result interpretation time: 10 – 15 Mins.
- Sensitivity: 100 %
- Specificity: 100 %



### LH Ovulation Rapid Test

- Chromatographic immunoassay
- Detection of Luteinizing hormone
- Specimen: Urine
- Result interpretation time: 5 Mins.
- Sensitivity: 100 %
- Specificity: 100 %



### Pregnancy hCG Detection Test

- Chromatographic immunoassay
- Detection of Human chorionic gonadotropin (hCG)
- Result interpretation time: 5 mins
- Specimen: Urine
- Sensitivity: 100 %
- Specificity: 100 %



### Dengue Ns1 Test

- Chromatographic immunoassay
- Detection of the Non-Structural Proteins Component (NS1) of the Dengue virus
- Specimen: Serum/Plasma
- Result interpretation time: 15 – 20 mins
- Sensitivity: 100 %
- Specificity: 100 %



### Dengue Combo Test

- Chromatographic immunoassay
- Detection of the Non-Structural Proteins Component ( NS1) of the Dengue virus & antibodies ( IgG/IgM)
- Specimen: Serum/Plasma
- Result interpretation time: 15 – 20 mins
- Sensitivity: 100 %
- Specificity: 100 %



All Test Kits are ICMR, NIB & NABL Lab Approved



### New Products List

1. Malaria PF Test Kit
2. Pregnancy Dipstick Test Kit
3. Pregnancy Midstream Test Kit
- 4.. Troponin I cTnI Test Kit
5. Sickle Cell Test Kit

## DISPOSABLE SINGLE USE SYRINGES



GAUGE	HUB COLOUR	SIZE	DIAMETER
16G	White	1x1/2"	1.60 mm
18G	Pink	1x1/2"	1.20 mm
19G	Cream	1x1/2"	1.10 mm
20G	Yellow	1", 1x1/4", 1x1/2"	0.90 mm
21G	Green	1", 1x1/4", 1x1/2"	0.80 mm
22G	Black	1", 1x1/4", 1x1/2"	0.70 mm
23G	Blue	1", 1x1/4", 1x1/2"	0.60 mm
24G	Medium Purple	1", 1x1/4", 1x1/2"	0.55 mm
25G	Orange	1", 1x1/4", 1x1/2"	0.55 mm
26G	Brown	½", 1x1/2"	0.45 mm

## HYPODERMIC NEEDLES



SIZE	NEEDLE GAUGE								
	16 G	18 G	19G	20 G	21 G	22 G	23 G	24 G	26 G
2ML	✓	✓	✓	✓	✓	✓	✓	✓	✓
3ML	✓	✓	✓	✓	✓	✓	✓	✓	✓
5ML	✓	✓	✓	✓	✓	✓	✓	✓	✓
10ML	[ Available as per requirement ]								
20ML	[ Available as per requirement ]								
50ML	[ Available as per requirement ]								

## I.V. INFUSION SET

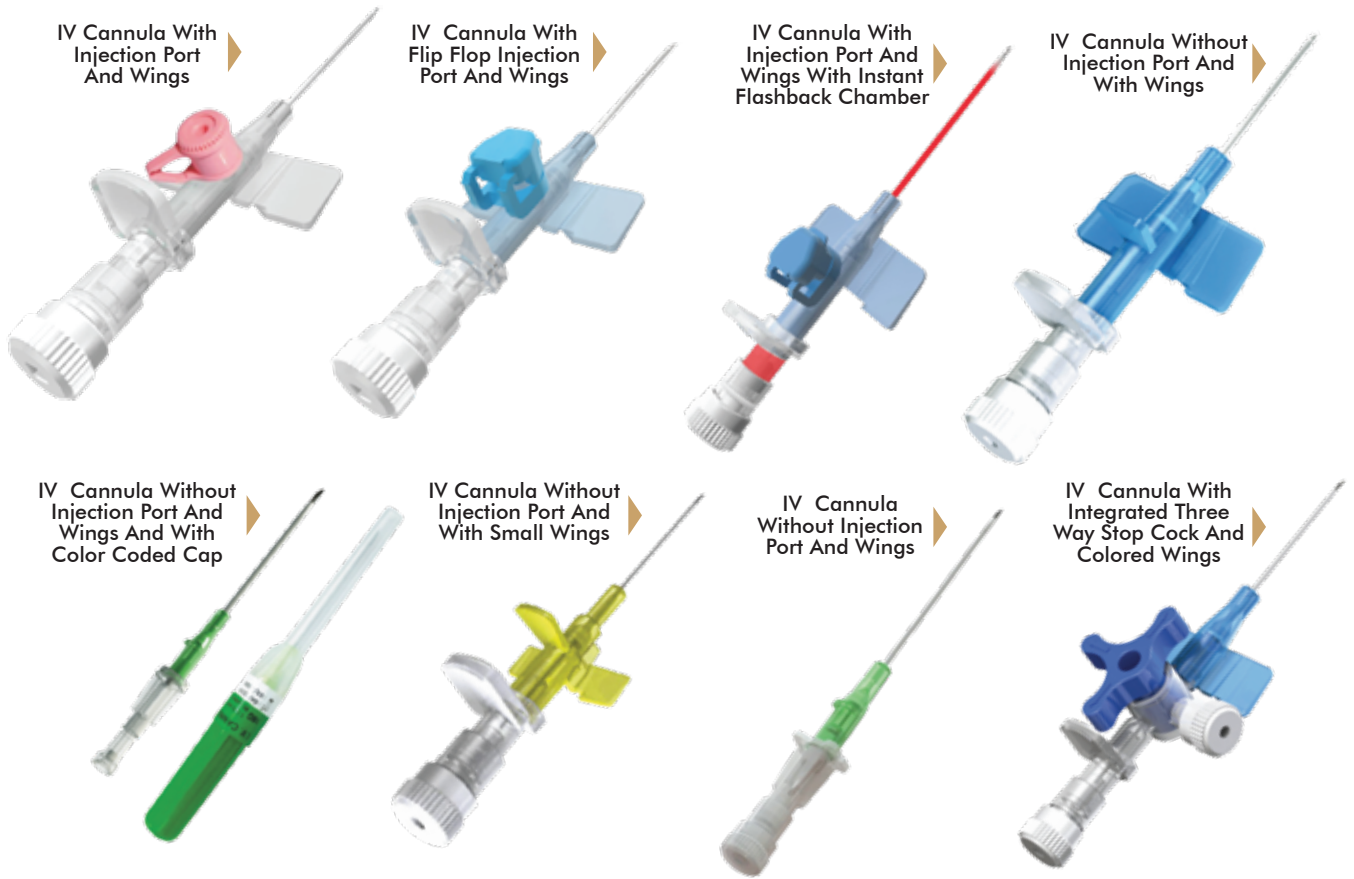


## BLOOD COLLECTION TUBES



Range	Color Coding	Additive	Type	Blood Draw	Tube Size (mm)	Clinical Use
Serum Blood Collection Tubes	(Red)	Plain (No Additive) Clot Activator	Vacuum & Non - Vacuum	4 ml 4 ml 6 ml	13 x 75 13 x 75 13 x 100	Serum Biochemistry, Drug Monitoring & Serum Immunology Test
	(Yellow)	Clot Activator with Gel	Vacuum & Non - Vacuum	4 ml 6 ml	13 X 75 13 X 100	Serum Biochemistry, Drug Monitoring & Serum Immunology Test
Whole Blood Collection Tubes	(Lavender)	K3 EDTA K3 EDTA K2 EDTA	Vacuum & Non - Vacuum	2 ml 3 ml 2 ml	13 X 75 13 X 75 13 X 75	Hematology Test
	(Black)	ESR	Vacuum	2 ml	13 X 75	Sedimentation Rate Test
Plasma Blood Collection Tubes	(Grey)	Sodium Fluoride + Potassium Oxalate	Vacuum & Non - Vacuum	2 ml	13 X 75	Glucose Test (Analysis of Blood Sugar)
	(Light Blue)	Sodium Citrate (3.2%)	Vacuum & Non - Vacuum	2 ml	13 X 75	Coagulation Test
	(Green)	Lithium Heparin	Vacuum & Non - Vacuum	2 ml	13 x 75	Emergency Biochemistry & Plasma Biochemistry Test

## IV CANNULA



## SAFETY I.V. CANNULA



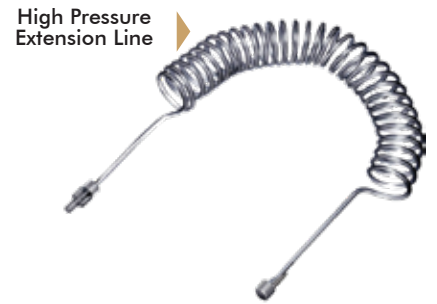
### SAFETY IV CANNULA



### 3 WAY STOPCOCK EXTENSION



### EXTENSION LINE-PRESSURE MONITORING LINE



### DISPOSABLE INFUSION PUMP



### DISPOSABLE PRESSURE TRANSDUCER



### NEEDLE FREE CONNECTOR



### BLOOD TRANSFUSION SET



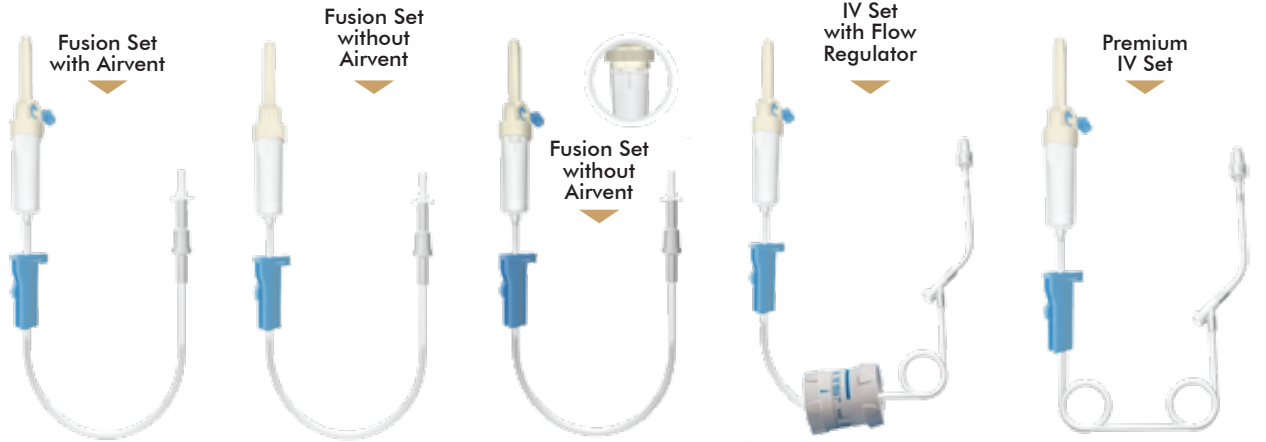
### BURETTE SET



### IV FLOW REGULATOR



### IV SET



### HEAT & MOISTURE EXCHANGER FILTER



### SPINAL NEEDLE



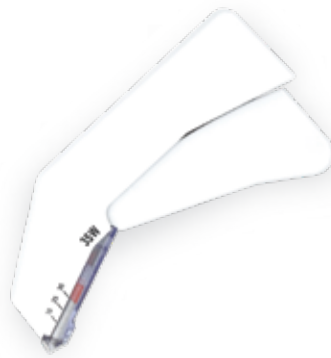
### YANKAUER SUCTION SET



### HEMODIALYSIS CATHETER



### SKIN STAPLER



### CLOSED WOUND DRAINAGE CATHETER



### LIGATION CLIPS





# ENDOTRACHEAL TUBE

Endotracheal Tube



Endotracheal Tube Cuffed



ET Tube (Reinforced)



## OXYGEN MASK



## OXY-PRONG NASAL CANNULA



## NEBULIZER MASK



## CATHETER MOUNT



## LUNG EXERCISER



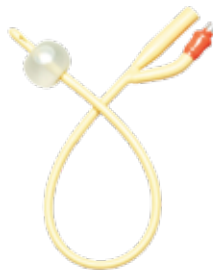
## VENTILATOR CIRCUIT



## SILICONE MANUAL RESUSCITATOR



## FOLEY BALLOON CATHETER



## SILICONE FOLEY BALLOON CATHETER



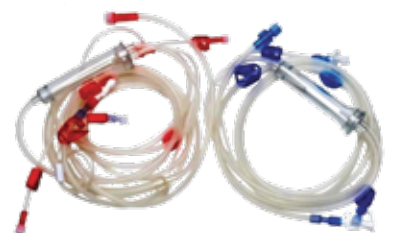
## THORACIC DRAINAGE CATHETER



## A.V. FISTULA NEEDLE



## BLOODLINE TUBING SET



# MEDICAL SURGICAL DISPOSABLE



ISOLATION GOWN



PATIENT GOWN



STERILE DISPOSABLE SURGEONS GOWNS



STERILE DISPOSABLE SURGEONS GOWN RE-INFORCED



DRAPES



MOPPING PAD



COLONOSCOPY TROUSER DISPOSABLE



FEEDING GOWN-DISPOSABLE



COTTON BALLS



GAUZE



UNDER PADS



APRON



STERILE SURGEONS CAP



STERILE DISPOSABLE NURSES/ BOUFFANT CAP



STERILE DISPOSABLE SHOE COVER



ID BAND



CORD CLAMP



FACE MASK WITH EYE SHIELD



PILLOW COVER



BED SHEET



BABY WEAR



KNEE O DRAPE

STERILE DISPOSABLE SURGICAL KITS (ALL KINDS)



## EXAMINATION GLOVES AND SURGICAL GLOVES





**Medesta Healthcare Pvt. Ltd.**

401-A Wing, 4<sup>th</sup> Floor, Solaris 1  
Premises Co-operative Society Ltd.,  
Saki-Vihar Road, Powai,  
Mumbai - 400072. INDIA.

**Contact Us**

**+91 80976 80866 / +91 89767 46598**  
**+91 86991 38489**

✉ [exports@medestahealthcare.com](mailto:exports@medestahealthcare.com)

🌐 [www.medestahealthcare.com](http://www.medestahealthcare.com)